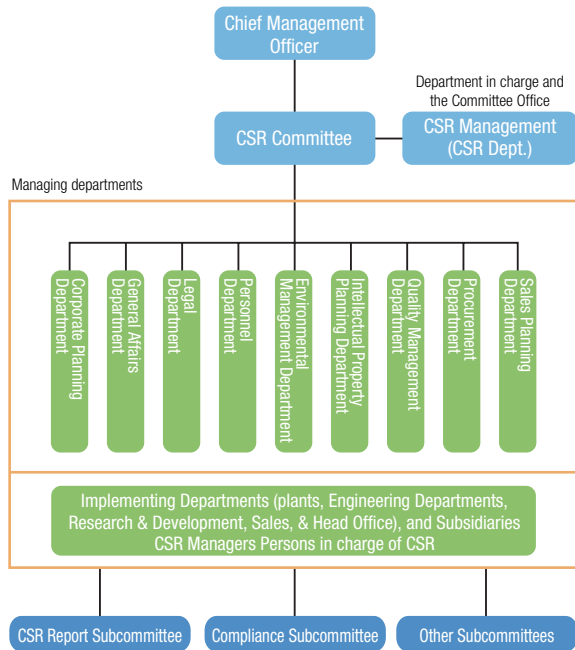


Corporate Social Responsibility (CSR) Activities

CSR Activities

Guided by a CSR Committee headed by a Chief Management Officer (the director in charge of the CSR Department), NTN has appointed CSR managers at every Group worksite in Japan to promote CSR activities. In so doing, we aim to respond to the expectations of all our stakeholders, including customers, shareholders and investors, suppliers, employees, and local communities.

CSR Promotion Structure



Addressing Work-Life Balance

Determined to create pleasant work environments, NTN has taken proactive steps to support the nurturing of the next generation of young people, and to develop an environment that promotes opportunities for women. As part of the measures to promote a proper balance between work and home life, we opened “Bear Kids Land,” NTN’s first in-house daycare center, on the grounds of the Iwata Works in April 2009. Along with temporary drop-off daycare, the center can also extend daycare services to assist employees that work after regular business hours. Meals are prepared at the center, and take into consideration children who have food allergies. The building itself, meanwhile, is a wooden, one-story structure made from natural wood. The center is equipped with an environmentally friendly rooftop solar power system and has a highly earthquake-resistant structure. From the latter feature, we are eyeing the dual use of the center as a shelter during times of disaster.



“Bear Kids Land”

Going forward, NTN has plans to steadily unveil similar facilities at its Kuwana and Okayama Works.

NTN Corporate Forest Stewardship

NTN, in close partnership with communities, is involved in a host of community contribution activities, one of which is our tree maintenance and upkeep activities in regions where NTN operates. At the Iwata Works in July 2008, NTN, together with the Iwata City Off-site Shigaji Property Ward and Shizuoka Prefecture, signed on as a member of the “Shizuoka Forests of the Future Supporter” system. In cooperation with prefectures and members of the community, today we are expanding the sphere of these activities as we develop “NTN Kigyo no mori” corporate stewardship activities that bring people into contact with nature.



“NTN Kigyo no mori” activities at the Okayama Works

Similarly, in August 2008 at the Okayama Works, NTN signed the “Corporate Cooperative Forest Development” agreement with the city of Mimasaka in Okayama Prefecture. Under the agreement, we will take part in forest development under the “NTN Kigyo no mori” banner on 3.5 hectares of municipal forest borrowed free of charge through March 2013.

Social Contribution Activities

Our commitment to make proactive contributions to society is enshrined in NTN’s corporate philosophy and CSR policy, as well as in the Employee Code of Conduct.

In fiscal 2008, NTN was awarded the Konju Service Medal of Honor for the donation of a full concert grand piano by the Kuwana Works, as well as the gift of a gazebo and other facilities given by the Iwata Works. Viewing social contribution activities as an investment in society, our fundamental policy is to take the initiative in addressing some of the many problems that society faces.

Independent assessment

NTN has been selected for inclusion in the following Socially Responsible Investment (SRI) funds and SRI indices, reflecting the evaluation by the stock market of NTN as a company that makes active efforts toward environmental preservation and social contribution.

NTN has been continuously selected in Japan by Morningstar since 2003, and overseas by FTSE4Good since 2002, and Ethibel Pioneer and Ethibel Excellence since 2005 (as of June 2009).



MS-SRI



FTSE4Good

FTSE4Good



Ethibel